



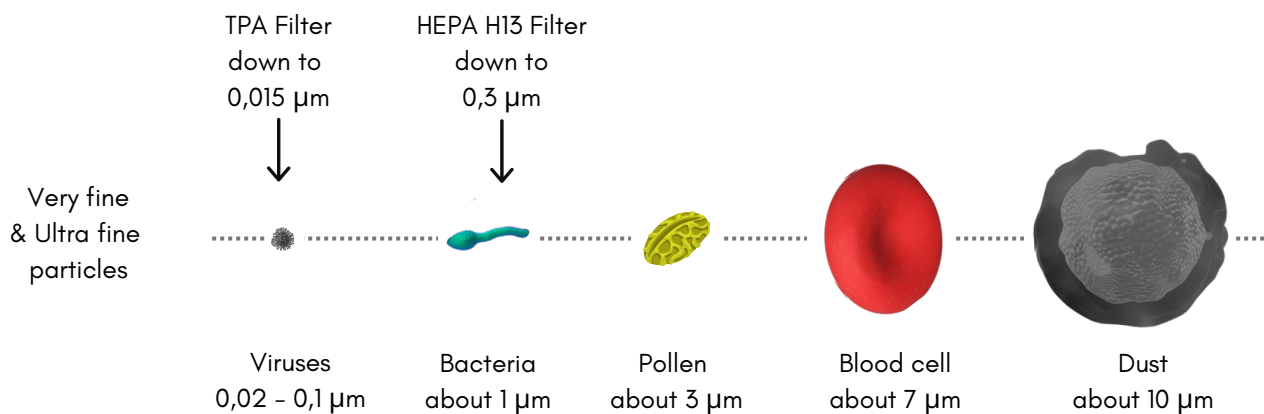
# AIR SANITIZER NEW GENERATION



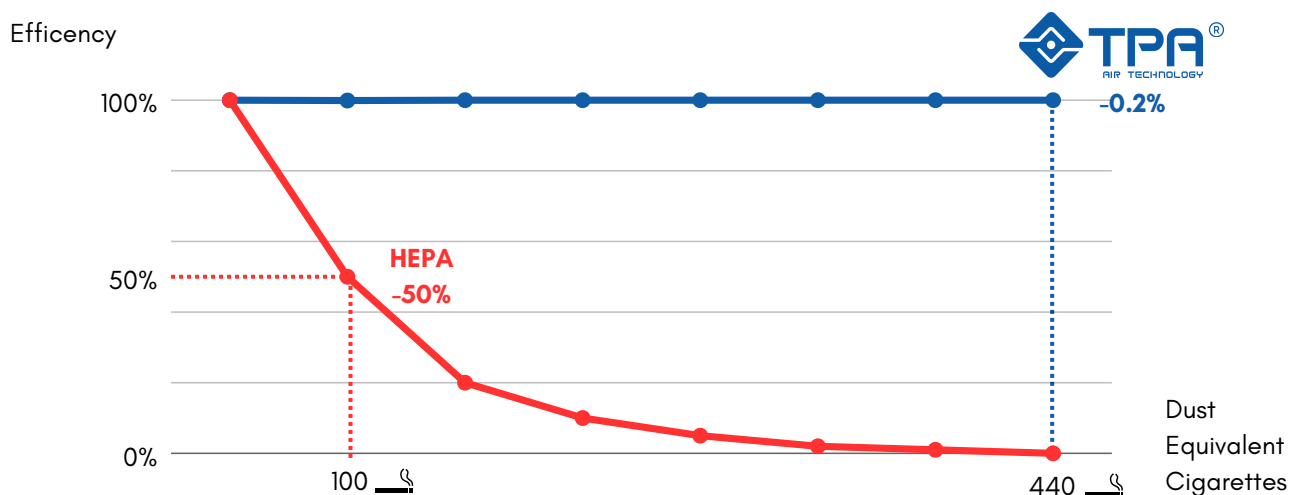
# WHY USE TPA<sup>®</sup>

- Catches particles with 99,99% efficiency
- Kills microbiological pathogenes
- Collects even smallest particles with magnetic force
- No consumables, No cost
- Sustainable due to washable filters (Zero Waste)
- Long time efficiency due to the new filter concept
- High air flow for quick cleaning and large area coverage
- Silent and Medical model available
- Very low power consumption
- Mobile use through wheels
- One touch operation - Automatic and Manuel mode
- Air Quality continuously monitored and displayed

## Filters down to ultra fine particles



## Long time efficiency



\*Dust equivalent test burning 100 cigarettes / According international standart GB/T 18801/2015

# HOW IT WORKS

## Step 1

### Pre-Filter (mesh)

Air flows from the sides into the Pre-Filter, collect hair, pet dander, etc.

## Step 2

### Cold plasma generator

Creates an cold electrical charged area, the energy destroys micro biological elements, and charges all particles to become magnetic

## Step 3

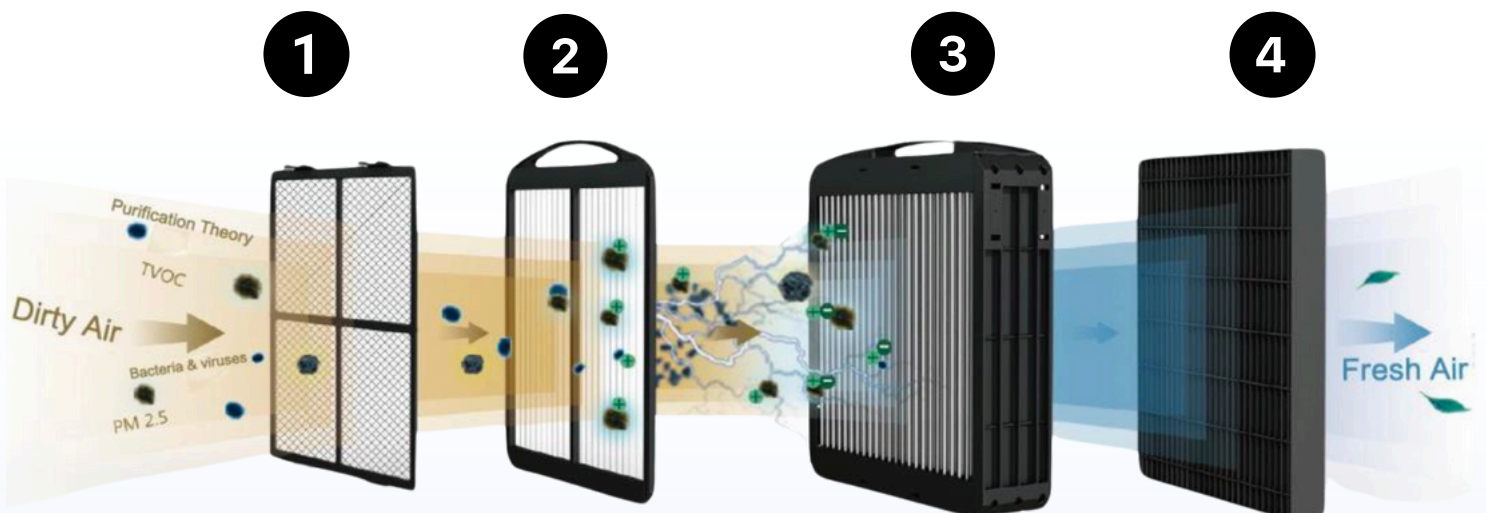
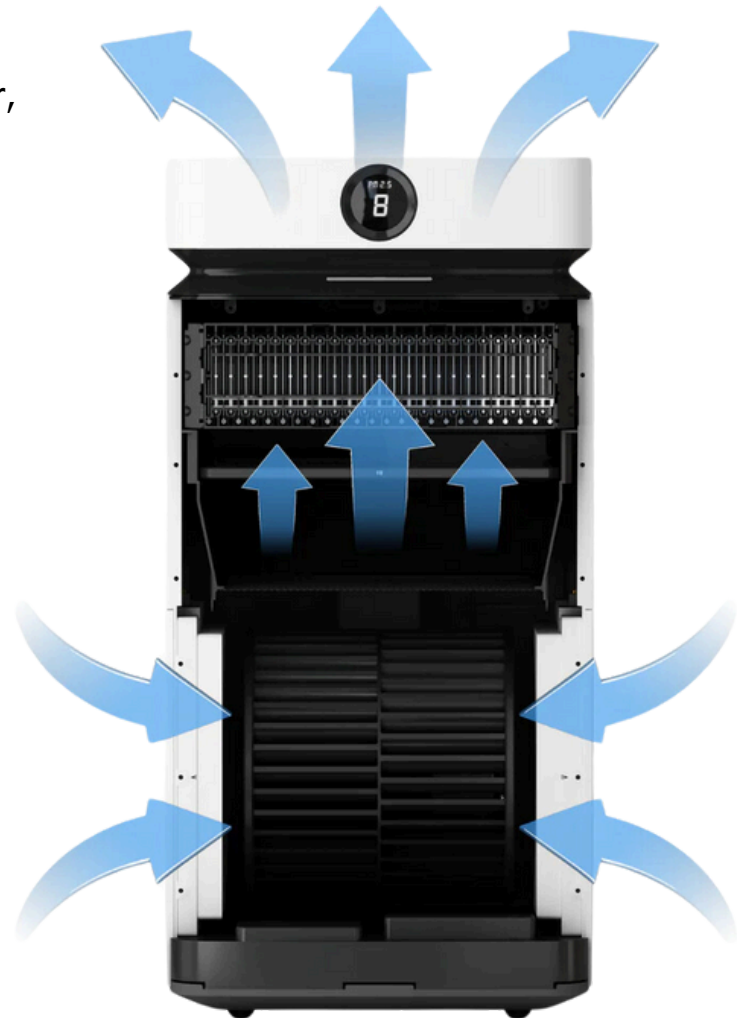
### Collector metal filter

Electrostatic charged particles stick to the magnetic metal filter.

## Step 4

### Carbon Filter

Removes unpleasant odors.



# TPA<sup>®</sup> X8 PRO



Area of Application up to 160 sqm  
 Weight 19.7kg  
 Dimensions 76 x 38 x 38cm

## Power Level 1

Airflow Volume >510 m<sup>3</sup>/h  
 Sound Pressure Level 33.1 dB(A)  
 Power Consumption 30W

## Power Level 2

Airflow Volume >1,000m<sup>3</sup>/h  
 Sound Pressure Level 47.2 dB(A)  
 Power Consumption 63W

## Power Level 3

Airflow Volume >1,150m<sup>3</sup>/h  
 Sound Pressure Level 50.5 dB(A)  
 Power Consumption 86W

## Power Level 4

Airflow Volume >1,250m<sup>3</sup>/h  
 Sound Pressure Level 52.5 dB(A)  
 Power Consumption 100W

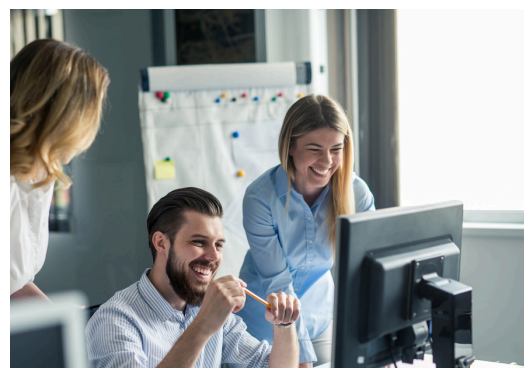
## Power Level 5

Airflow Volume >1,350m<sup>3</sup>/h  
 Sound Pressure Level 54 dB(A)  
 Power Consumption 110W

## Power Level SLEEP

Airflow Volume >275m<sup>3</sup>/h  
 Sound Pressure Level 30.4 dB(A)  
 Power Consumption 26W

\*silent Power Levels below 40 dB(A) marked blue



# TPA<sup>®</sup> X8 PRO SILENT

Area of Application in Silent mode up to 100 sqm  
Area of Application in PL 5 up to 160 sqm  
Weight 19.7kg  
Dimensions 76 x 38 x 38cm

## Power Level 1

Airflow Volume >510m<sup>3</sup>/h  
Sound Pressure Level 33.1 dB(A)  
Power Consumption 30W

## Power Level 2

Airflow Volume >630m<sup>3</sup>/h  
Sound Pressure Level 37.2 dB(A)  
Power Consumption 35W

## Power Level 3

Airflow Volume >720m<sup>3</sup>/h  
Sound Pressure Level 39.0 dB(A)  
Power Consumption 40W

## Power Level 4

Airflow Volume >790m<sup>3</sup>/h  
Sound Pressure Level 39.8 dB(A)  
Power Consumption 45W

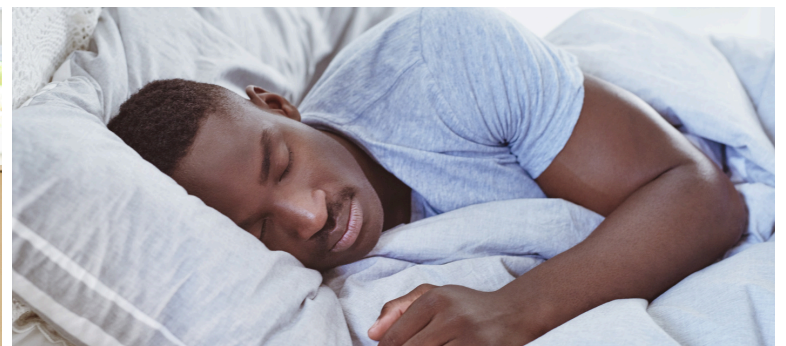
## Power Level 5

Airflow Volume >1,350m<sup>3</sup>/h  
Sound Pressure Level 54 dB(A)  
Power Consumption 110W

## Power Level SLEEP

Airflow Volume >275m<sup>3</sup>/h  
Sound Pressure Level 30.4 dB(A)  
Power Consumption 26W

\*silent Power Levels below 40 dB(A) marked blue



# TPA<sup>®</sup> X8 PRO MEDICAL



SPECIAL FILTER  
UPGRADE  
TO

**TPA X8 PRO-MEDICAL**



Usable for  
TPA X8 PRO and TPA X8 PRO silent

- Upgrade weight +2.6kg
- Resistant to disinfection liquids

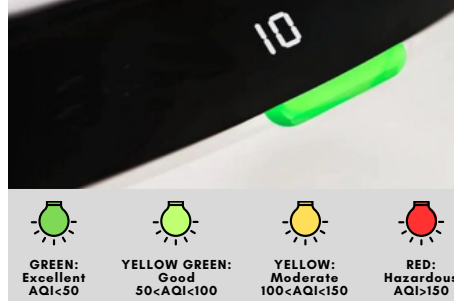


# EASY HANDLING

In **Manuel Mode** easily cycle through the 5 airflow settings.



In **Auto Mode** the system adjusts its performance based on detected air pollution.



**No Consumables! No waste! Washable filter!**



**Globally certified**



Efficiency on bacteria >99.9%



Reduction of formaldehyde >99.1%



Efficiency on particles PM2.5 >99.9%



Remove ultrafine particles down to 0.015 micrometer



Ozon Emission <0.01 PPM Undetectable



Efficiency on Tuberculosis >99.99%



Efficiency on Bacillus anthracis >99.99%



Efficiency on Covid-19 Virus >99.986%



Efficiency on Micrococcus Luteus >99.85%



Efficiency on Yeast & Mold >99.9%



Removal Rate Influenza Virus >99.8765



Certificate of Conformity United Arab Emirates



[WWW.TPA.EU](http://WWW.TPA.EU)

**TPA Air Technology**

**Office Dubai  
P.O. Box 73540  
Dubai /UAE**

**Office / Showroom Sharjah  
Warehouseland, Industrial Area 18  
Sharjah / UAE**

**[www.tpa.eu](http://www.tpa.eu) / [info@tpa.eu](mailto:info@tpa.eu)**